

## Axcend FocusArray

### Full Spectrum Diode Array Detector for Capillary Liquid Chromatography

190 -700 nm, diode array detector

*The Axcend FocusArray is the ideal choice for your challenging liquid chromatography requirements. The only diode array detector for capillary HPLC offers a full three orders of magnitude linearity needed to identify trace elements in the presence of your target analytes.*



Axcend AutoFocus

Axcend Focus LC

FocusArray

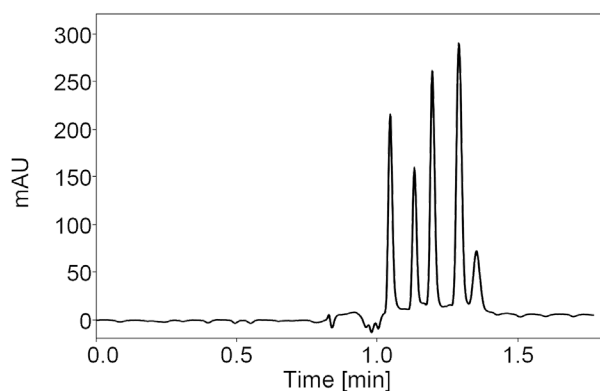
#### Integration and Efficiency

Built upon the foundation of the Axcend Focus LC®, the smallest full-stack system in the industry also includes Axcend AutoFocus™, a 40-vial / 96-well plate autosampler, and FocusArray, the broad spectrum diode array detector (DAD). This low-flow, small footprint system enables real-time data analysis at the point of sampling.

The 1.1 mm path-length in an 11 nL volume provides outstanding sensitivity when combined with the Axcend Focus LC®. Fluidic connections are made easy with a 25 µm ID / 360 µm OD PEEKSil transfer-line and Axcend's award-winning cartridge that contains the separation.

#### AT A GLANCE

- Removes the constraint from LED-based light sources - Radio frequency identification (RFID) tags for all flow cells and UV lamp provide new levels of data traceability by re-cording parameters such as cell dimensions, lamp usage, serial number.
- Full UV absorption spectrum to view maximum absorbent points.
- More reliable and robust peak integration process due to less baseline drift.

**Pharma Test Mix:**

sulfamethazine, carbamazepine,  
ketoprofen, flavone, amcinonide (100 µg/mL)

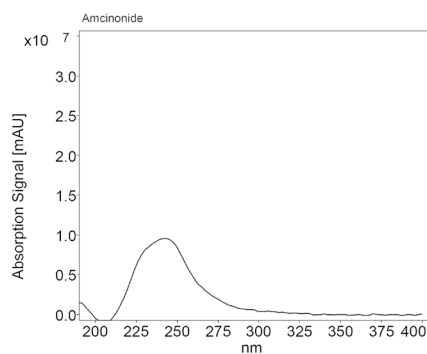
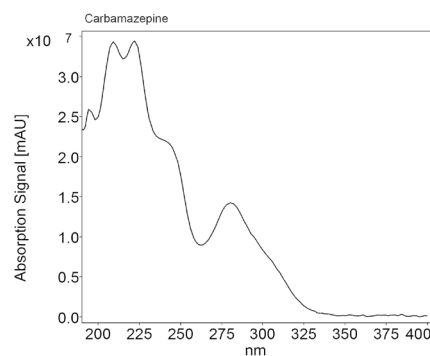
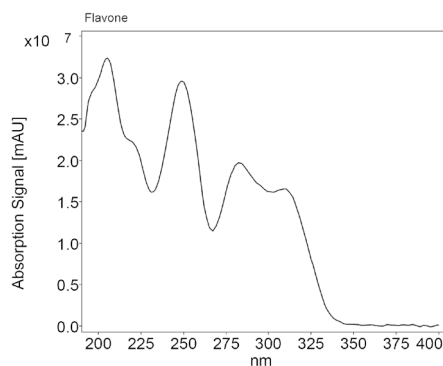
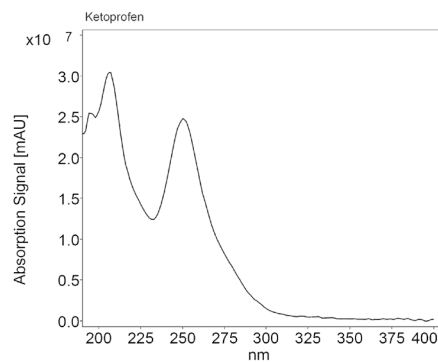
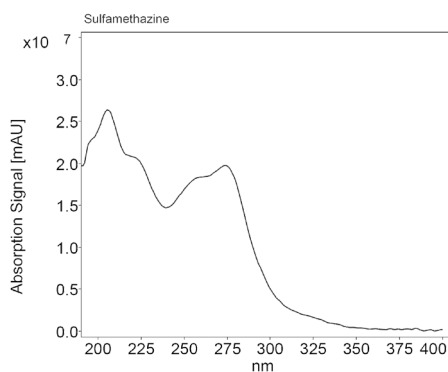
**Column:**

HSS T3, 100 Å, 1.8 µm, 150 µm x 100 mm

**Method:**

Gradient at 2 µL/min flow rate

Injection Volume: 40 nL



### Technical Data

Flow cell	12 nL volume, 1.2 mm pathlength
Maximum flow cell operating pressure	6.8 bar (100 psi)
Detection channels	8 (digital)/4 (analog)
Number of diodes	256
Pixel pitch	2 nm/diode
Light source	Deuterium (D <sub>2</sub> ) lamp with integrated GLP chip
Wavelength range	190 – 700 nm
Spectral bandwidth	<10 nm at 254 nm Hg line (FWHM)
Wavelength accuracy	± 1 nm
Wavelength verification	Internal holmium filter and deuterium lines
Maximum data rate	100 Hz (LAN)/12.5 Hz (analog)
Time constants	0.00 / 0.01 / 0.02 / 0.05 / 0.1 / 0.2 / 0.5 / 1.0 / 2.0 / 5.0 / 10.0 s
Integration time	Automatic
Drift	400 µAU/h at 255 nm (2 Hz data rate)
Linearity	Up to 3 orders of magnitude (peak area of propylparaben at 255 nm)
Limit of detection	0.0125 ppm (propylparaben at 255 nm at S/N = 3)
Dimensions	(W x D x H): 23.9 x 37.6 x 14.2 cm (9.4 x 14.8 x 5.6 in.)
Weight	27.7 lbs/12.6 kg
Power supply	100 – 240 V, 50 – 60 Hz, 75 W

### Communication

Inputs	Error (IN), Start (IN), Autozero
Outputs	Events 1 - 2 (Relay and TTL compatible), Error (OUT), + 5 V, Valve + 24 V, Valve (OUT)
Analog outputs	4 x 0 - 5 V, 20 bit, offset adjustable
Control	Control: Software, event control, analog, terminal protocol
Interfaces	LAN (RJ-45), RS-232 (SUB-D 9, service only), multi-pin connector, analog (RCA cinch connector)

